

HTB Bimetal Thermometer



Nanjing Hangjia Electronic Technology Co.,Ltd.

Product Overview

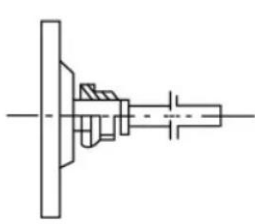
HTB series industrial Bimetallic thermometer is a kind of measuring instrument suitable for field measurement temperature. It can be directly measure the temperature of precious gas, liquid and steam,widely used in machinery, shipbuilding, petrochemical, metallurgy, electric power, light industry and scientific research departments. Compared with the industrial glass mercury thermometer,WSS series industrial Bimetallic thermometer has the advantages of no mercury damage, easy reading, robustness and vibration resistance. It can be used to replace the fragile industrial glass mercury thermometer.

Features

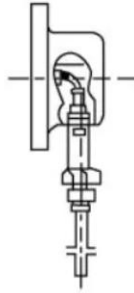
1. No harmful mercury, easy to read
2. Protection tube material is stainless steel, pressure and corrosion resistance
3. Axial and radial-type, 135-type, universal type and other varieties, adapted to the needs of a variety of on-site installation

Parameters

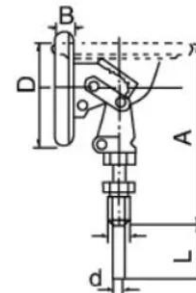
Dial Diameters	2.5"(63mm), 3"(75mm), 4"(100mm)
Pressure range	-50°C~0~600°C
Connector/Socket	M20*1.5, G1/2, other customized
Tube diameters	6mm, 8mm,10mm, other customized
Tube length	Customized, at least 50mm
Dial Plate	Single,dual (°C,°F)
Pointer	Aluminum
Case	ss304
Ring	ss304/ crimped ring
Installation direct	Axial type, Radial type, multi-direction type
Liquid filled	Glycerin (selected)
Accuracy	1.5%
Trademark:	Hangjia
Transport package:	Paper carton



Back Connection Type



Bottom Connection Type



Adjustable Angle Type

Ordering Guide

Code	Type										
HTB	Bimetal thermometer	Range	Measure range								
		(0-X) °C	X input directly								
			Code	Dial Diameter							
			60	Φ60							
			100	Φ100							
			150	Φ150							
			Code	Structure							
			1	Axial Direction							
			2	Radial Direction							
			3	Multi-direction							
			Code	Insert length							
			1	at least 50mm, input directly							
				Code	Tube diameter						
				1	8mm						
				2	10mm						
		3	12mm								
		Code	Tube length								
		L	mm, input directly								
		Code	Installation								
		1	Without								
		2	Fixed thread								
		3	Tri-clamp								
		Code	Connection								
		P1	M20×1.5								
		P4	G1/2								
		K1	1.5" clamp								
		Code	Others								
		F	Anti-corrosion								
		N	Shock-proof								
Sample: HTB	0-200°C	100	3	l=80	1	L=95	2	P1	N		